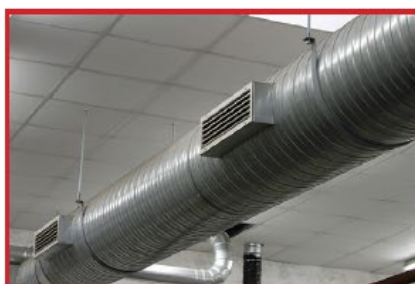
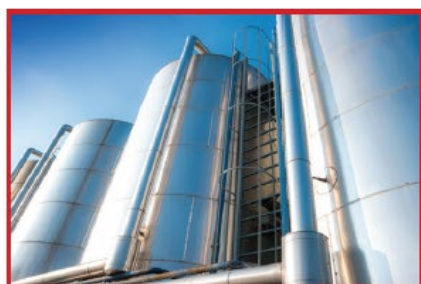


TECHNICAL DATA

Polymers and the curing system:	Butyl rubber, synthetic resins, fillers and organic solvents
Consistency:	tixotropic, non-slumping paste
Application temperature:	+5°C / +40°C
Specific weight:	1,39 g/ml
Shore A hardness:	15 Shore A
Tack-free time:	20 - 30 minutes
Complete curing:	4 – 6 weeks
Non-volatile content:	85%
Extrusion rate (Ø=2,6 mm; 2 bar; internal method ASTM D-2452-75 mod.):	3,5 - 7 g/min *
Service temperature range:	-25°C / +70°C

Values given in this table must not be considered as specifications.
* Values valid for product supply specification upon leaving the factory.



PRODUCT DESCRIPTION

One part butyl rubber based sealant that cures through evaporation of the solvent becoming a mass with predominantly plastic characteristic.

PRODUCT CHARACTERISTICS AND USES

Optimum resistance to water.
For sealing joints subjected to limited movements and vibration.
During curing the product is subjected to shrinkage.

PROFESSIONAL USES

- Flanged joints on air ducts, containers and silos.
- Assembly sandwich panels frames.
- Sealing window frames.
- Overlapping and connecting of plates.

METHOD OF USE

Surface preparation: all surfaces should be dry and clean.
Adhesion: good onto metals and many different materials commonly used in the building industry.
Application: in deep joints insert a compressible backing material upon which the sealant can be extruded.
For this purpose we suggest the use of our **FILTENE**, a closed cell polyethylene foam profile.

Apply the sealant making sure of contact on the sides of the joint.
The thickness of the sealant must not be lower than 6 mm.
It is advisable to apply enough sealant to fill the joint without any need of tooling the surface.
EV FLEX can be overpainted with alkyd enamels.

SAFETY AND HEALTH

See Safety Data Sheet.

STORAGE STABILITY

24 months from production date in the original container.
Keep the product in a dry place at a temperature range between +5°C/+25°C.

PACKAGING

Code	Colour	Packaging	Pcs./box
1003679	grey	300 mlo cartridge	24

Other sizes available on request

